



(FORMERLY NEHRU COLLEGE OF NURSING)

4.1.3: Availability and adequacy of general campus facilities and overall ambience

Sl.No	Description	Page Number/ Link
1	Hostel	3
2	Medical Facilities	11
3	Toilet	12
4	Canteen	13
5	Post Office	14
6	Bank and ATM	15
7	Roads and Signage	16
8	Facilities for teaching - learning	https://www.pkdacollegeofnursing.com/naac/ssr/criteria-4/4.1.1TEACHING%20-%20LEARNING%20FACILITIES.pdf
9	Sports and Cultural Facilities	https://www.pkdacollegeofnursing.com/naac/ssr/criteria-4/4.1.2%20SPORTS%20AND%20CULTURAL%20FACILITIES.pdf
10	Alternate Source Of energy	https://www.pkdacollegeofnursing.com/naac/ssr/criteria-7/7.1.3%20ALTERNATE%20SOURCES%20OF%20ENERGY.pdf
11	Waste Management	https://www.pkdacollegeofnursing.com/naac/ssr/waste-management.php
12	Water conservation Facilities	https://www.pkdacollegeofnursing.com/naac/ssr/criteria-7/7.1.5%20WATER%20CONSERVATION%20FACILITIES.pdf
13	Green Campus Initiatives	https://www.pkdacollegeofnursing.com/naac/ssr/criteria-7/7.1.6%20GREEN%20CAMPUS%20INITIATIVE.pdf



P. K. DAS COLLEGE
of **NURSING**
PANAYUR (PO), VANIYAMKULAM, PALAKKAD - 679522



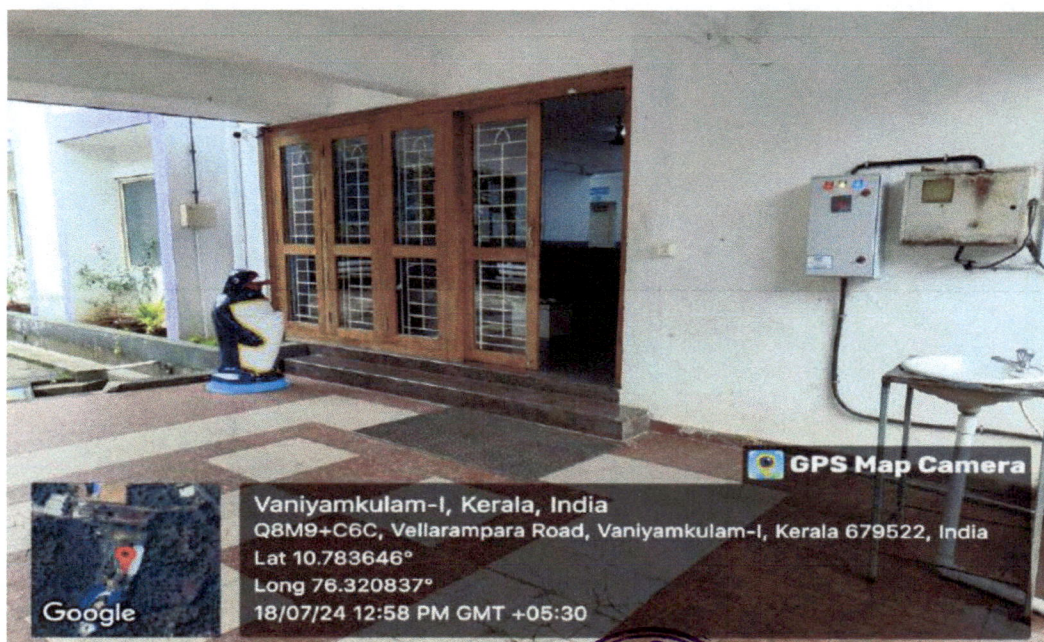
(Approved by Indian Nursing Council, Kerala Nurses & Midwives Council & Kerala Government
Affiliated to Kerala University of Health Sciences)

14	Barrier Free Environment	https://www.pkdascollegeofnursing.com/naac/ssr/criteria-7/7.1.7%20BARRIER%20-FREE%20ENVIRONMENT.pdf
15	Inclusive Environment	https://www.pkdascollegeofnursing.com/naac/ssr/criteria-7/7.1.8%20INCLUSIVE%20ENVIRONMENT.pdf



4.1.3 AVAILABILITY AND ADEQUACY OF GENERAL CAMPUS FACILITIES AND OVERALL AMBIENCE

HOSTEL



G. S. M.
PRINCIPAL
P K DAS COLLEGE OF NURSING
PANAYUR (P.O), VANIYAMKULAM
OTTAPALAM, PALAKKAD DT
KERALA - 679522



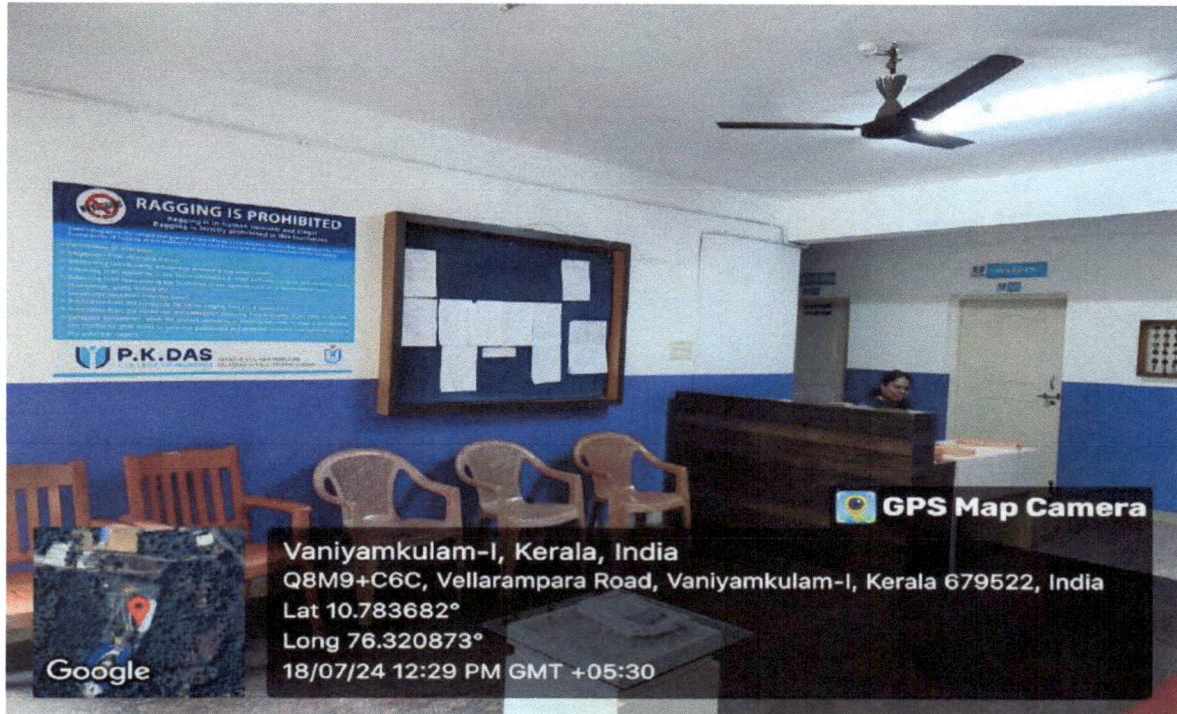
NEHRU COLLEGE of NURSING



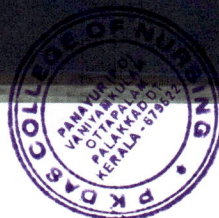
PANAYUR (P O), VANIYAMKULAM, PALAKKAD - 679 522

(Approved by Indian Nursing Council, Kerala Nurses & Midwives Council & Kerala Government
Affiliated to Kerala University of Health Sciences)

HOSTEL RECEPTION AREA



WARDEN ROOM



PRINCIPAL
P.K. DAS COLLEGE OF NURSING
PANAYUR (P.O.), VANIYAMKULAM
OTTAPALAM, PALAKKAD DT
KERALA - 679522



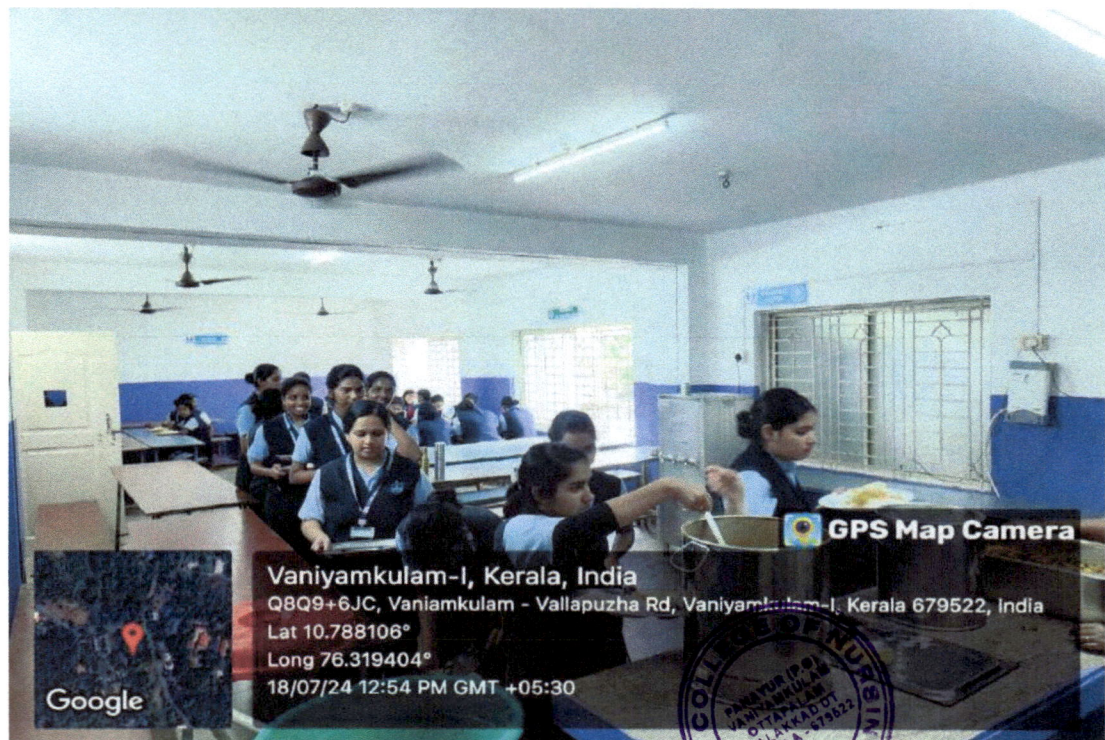
NEHRU COLLEGE of NURSING



PANAYUR (P O), VANIYAMKULAM, PALAKKAD - 679 522

(Approved by Indian Nursing Council, Kerala Nurses & Midwives Council & Kerala Government
Affiliated to Kerala University of Health Sciences)

HOSTEL MESS HALL



G.P.M.
PRINCIPAL
P.K.DAS COLLEGE OF NURSING
PANAYUR (P.O.) VANIYAMKULAM



NEHRU COLLEGE of NURSING



PANAYUR (P O), VANIYAMKULAM, PALAKKAD - 679 522

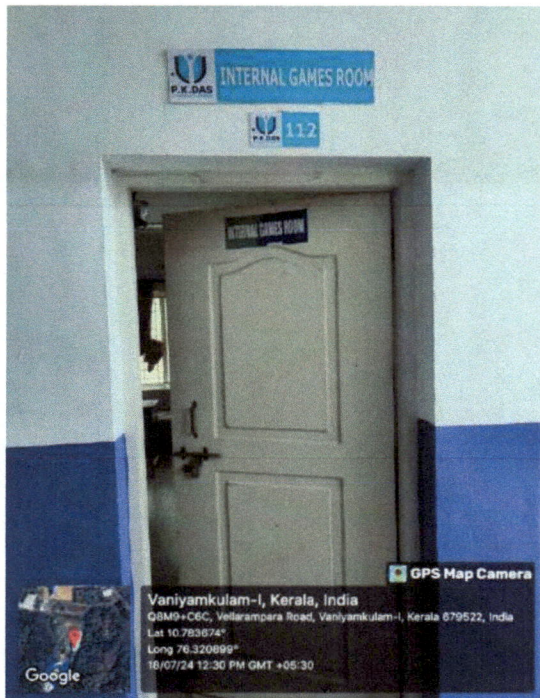
(Approved by Indian Nursing Council, Kerala Nurses & Midwives Council & Kerala Government
Affiliated to Kerala University of Health Sciences)

CORRIDOR



Ottapalam, Kerala, India
1/756, Ottapalam, Vaniyamkulam-I, Kerala 679522, India
Lat 10.787401°
Long 76.319042°
18/07/24 12:38 PM GMT +05:30

RECREATION FACILITIES



Vaniyamkulam-I, Kerala, India
QB09+C6C, Vellarampara Road, Vaniyamkulam-I, Kerala 679522, India
Lat 10.783674°
Long 76.320899°
18/07/24 12:30 PM GMT +05:30



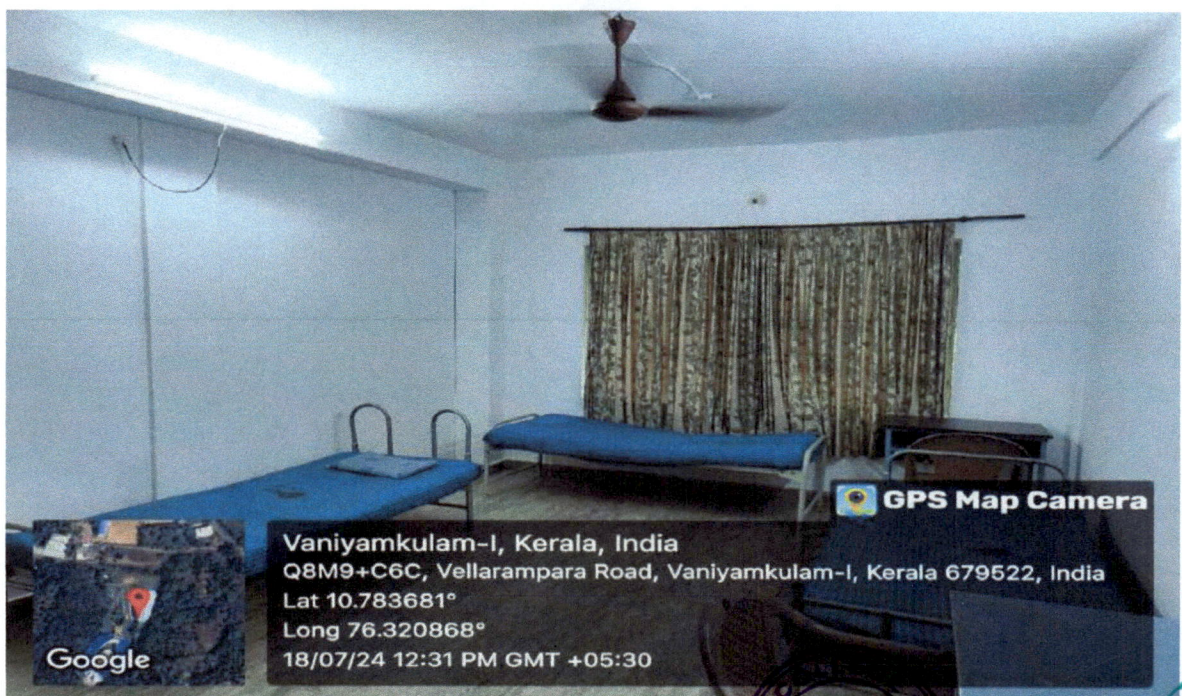
Vaniyamkulam-I, Kerala, India
QB09+C6C, Vellarampara Road, Vaniyamkulam-I, Kerala 679522, India
Lat 10.783679°
Long 76.320871°
18/07/24 12:41 PM GMT +05:30



G.P.S.
PRINCIPAL
P K DAS COLLEGE OF NURSING
PANAYUR (P.O), VANIYAMKULAM
OTTAPALAM, PALAKKAD DT
KERALA - 679522



SICK ROOM



G.S.V.
PRINCIPAL
P K DAS COLLEGE OF NURSING
PANAYUR (P.O), VANIYAMKULAM
OTTAPALAM, PALAKKAD DISTRICT
KERALA - 679522



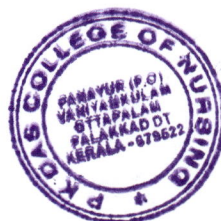
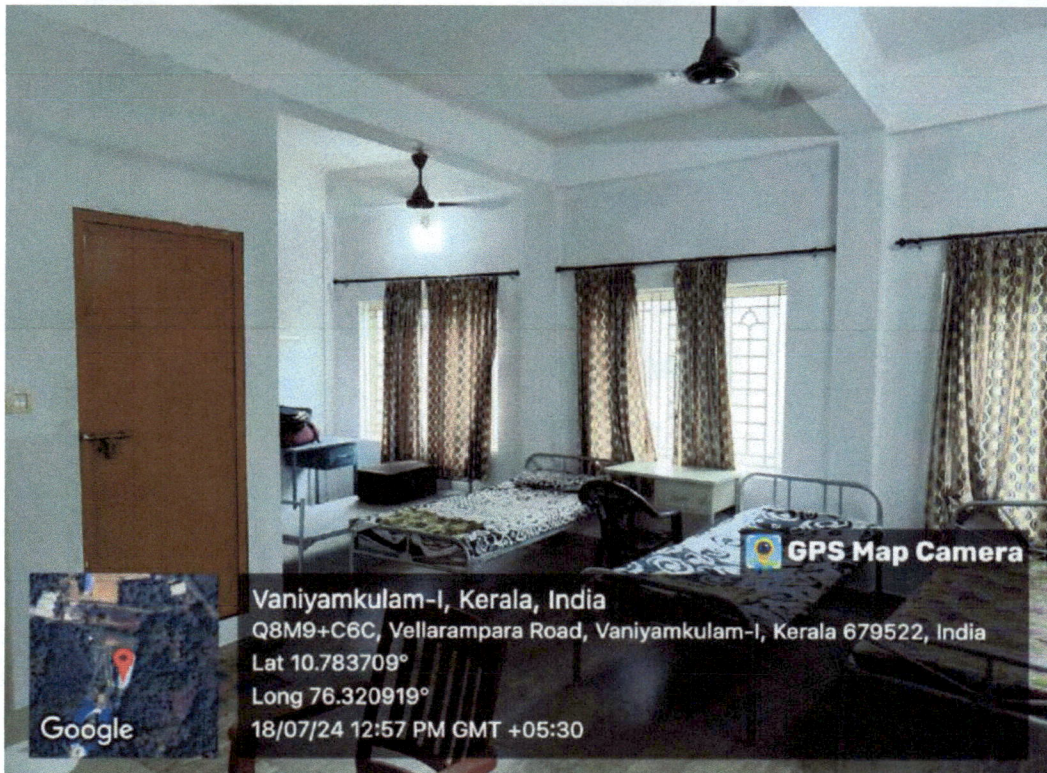
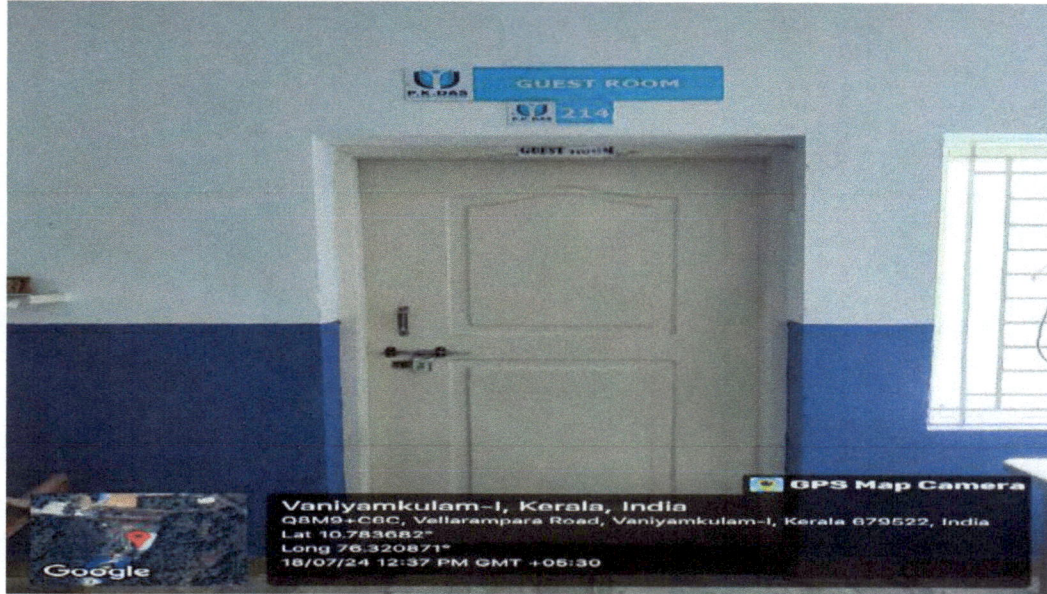
NEHRU COLLEGE of NURSING



PANAYUR (P O), VANIYAMKULAM, PALAKKAD - 679 522

(Approved by Indian Nursing Council, Kerala Nurses & Midwives Council & Kerala Government
Affiliated to Kerala University of Health Sciences)

GUEST ROOM



G.P.S.
PRINCIPAL
P K DAS COLLEGE OF NURSING
PANAYUR (P.O), VANIYAMKULAM
OTTAPALAM, PALAKKAD DT
KERALA - 679522



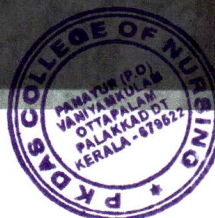
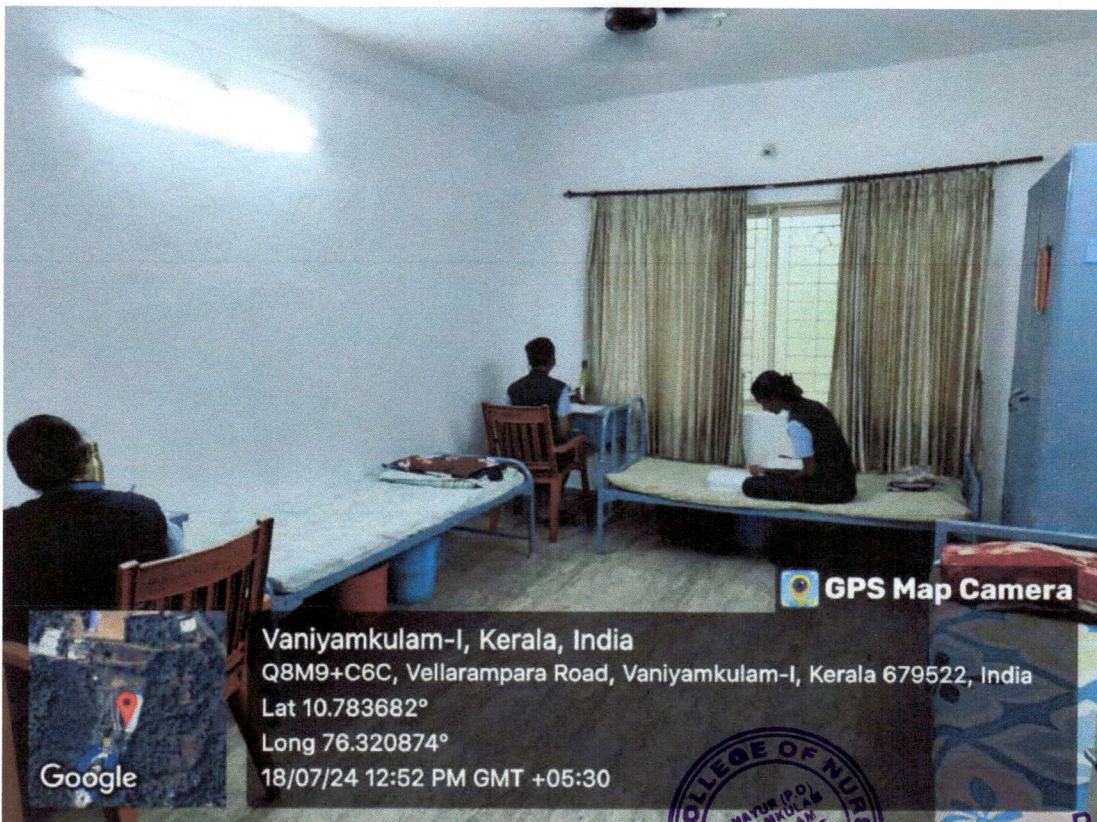
NEHRU COLLEGE of NURSING



PANAYUR (P.O), VANIYAMKULAM, PALAKKAD - 679 522

(Approved by Indian Nursing Council, Kerala Nurses & Midwives Council & Kerala Government
Affiliated to Kerala University of Health Sciences)

STUDENTS ROOM



PRINCIPAL
P.K. DAS COLLEGE OF NURSING
PANAYUR (P.O), VANIYAMKULAM
OTTAPALAM, PALAKKAD DT
KERALA - 679522



TOILET IN HOSTEL



WASHING AND DRYING FACILITIES



PRINCIPAL
P K DAS COLLEGE OF NURSING
PANAYUR (P.O), VANIYAMKULAM
OTTAPALAM, PALAKKAD DT
KERALA - 679522



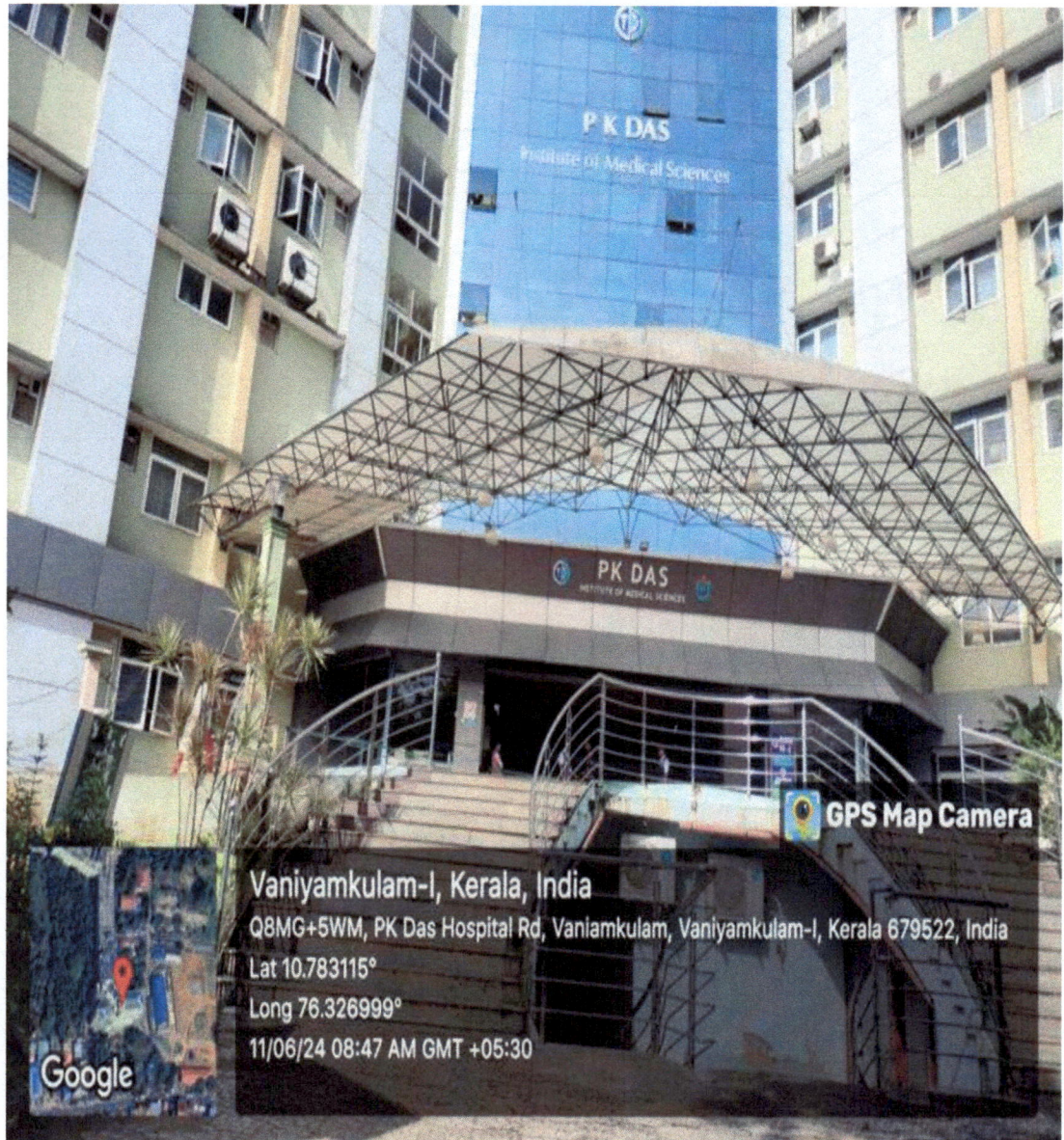
NEHRU COLLEGE of NURSING



PANAYUR (P O), VANIYAMKULAM, PALAKKAD - 679 522

(Approved by Indian Nursing Council, Kerala Nurses & Midwives Council & Kerala Government
Affiliated to Kerala University of Health Sciences)

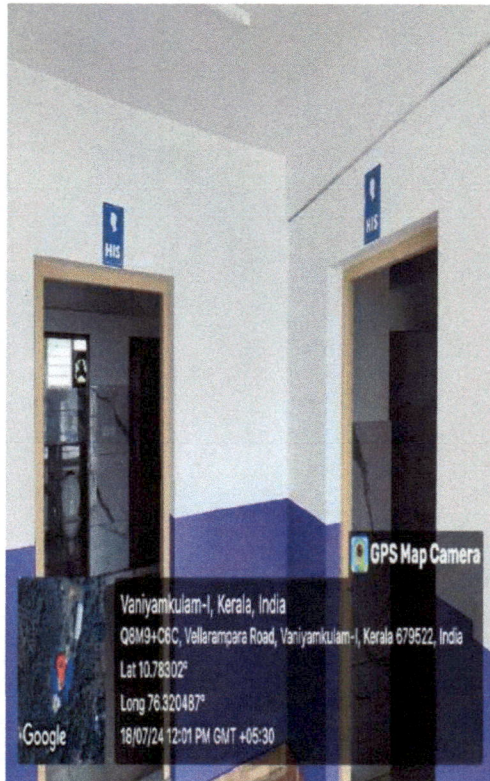
MEDICAL FACILITIES



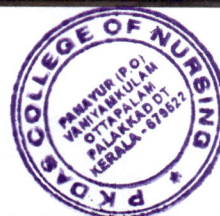
Geetha
PRINCIPAL
PK DAS COLLEGE OF NURSING
PANAYUR (P.O), VANIYAMKULAM
OTTAPALAM, PALAKKAD DT
KERALA - 679522



TOILET IN COLLEGE



DIYANGJAN FRIENDLY WASH ROOMS



G. Smita
PRINCIPAL
P K DAS COLLEGE OF NURSING
PANAYUR (P.O), VANIYAMKULAM
OTTAPALAM, PALAKKAD DT
KERALA - 679522



NEHRU COLLEGE of NURSING



PANAYUR (P O), VANIYAMKULAM, PALAKKAD - 679 522

(Approved by Indian Nursing Council, Kerala Nurses & Midwives Council & Kerala Government
Affiliated to Kerala University of Health Sciences)

CANTEEN



GASUR
PRINCIPAL
P.K. DAS COLLEGE OF NURSING
PANAYUR (P.O.), VANIYAMKULAM
OTTAPALAM, PALAKKAD DT
KERALA - 679522



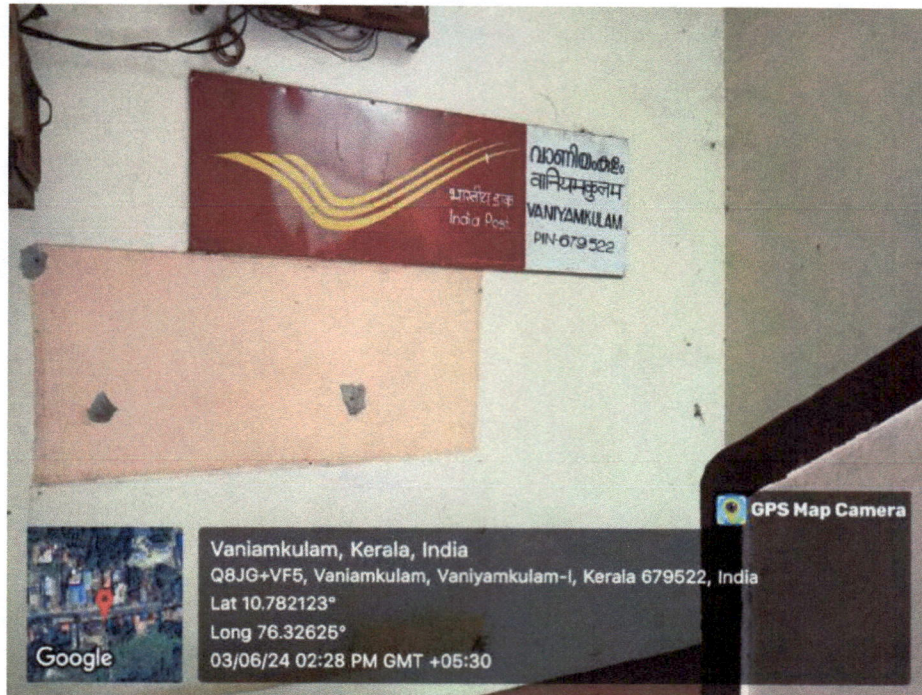
NEHRU COLLEGE of NURSING



PANAYUR (P O), VANIYAMKULAM, PALAKKAD - 679 522

(Approved by Indian Nursing Council, Kerala Nurses & Midwives Council & Kerala Government
Affiliated to Kerala University of Health Sciences)

POST OFFICE



P.K. Das
PRINCIPAL
P K DAS COLLEGE OF NURSING
PANAYUR (P.O), VANIYAMKULAM
OTTAPALAM, PALAKKAD DT
KERALA - 679522



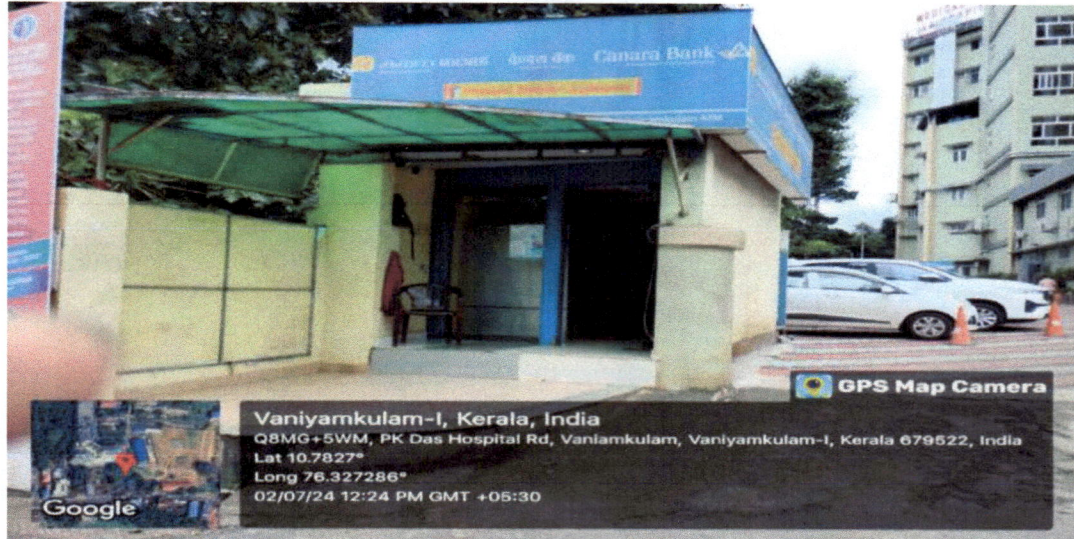
NEHRU COLLEGE of NURSING



PANAYUR (P O), VANIYAMKULAM, PALAKKAD - 679 522

(Approved by Indian Nursing Council, Kerala Nurses & Midwives Council & Kerala Government
Affiliated to Kerala University of Health Sciences)

BANK AND ATM



GPS Map
PRINCIPAL
P K DAS COLLEGE OF NURSING
PANAYUR (P.O), VANIYAMKULAM
OTTAPALAM, PALAKKAD DT
KERALA - 679522



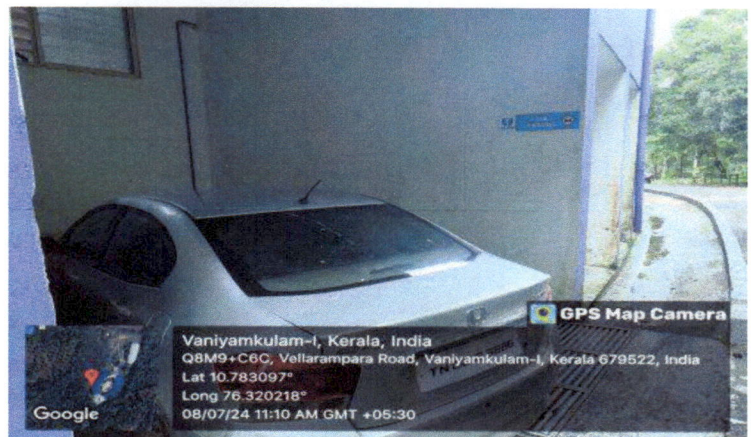
NEHRU COLLEGE of NURSING



PANAYUR (P.O), VANIYAMKULAM, PALAKKAD - 679 522

(Approved by Indian Nursing Council, Kerala Nurses & Midwives Council & Kerala Government
Affiliated to Kerala University of Health Sciences)

ROADS AND SIGNAGE



G.P.S. Sign
PRINCIPAL
PK DAS COLLEGE OF NURSING
PANAYUR (P.O), VANIYAMKULAM
OTTAPALAM, PALAKKAD DT
KERALA - 679522



ROADS AND SIGNAGE (PARENT HOSPITAL)



G. S. S.
 PRINCIPAL
 PK DAS COLLEGE OF NURSING
 PANAYUR (P.O), VANIYAMKULAM
 OTTAPALAM, PALAKKAD DT
 KERALA - 679522



NEHRU COLLEGE of NURSING



PANAYUR (P O), VANIYAMKULAM, PALAKKAD - 679 522

(Approved by Indian Nursing Council, Kerala Nurses & Midwives Council & Kerala Government
Affiliated to Kerala University of Health Sciences)

ROADS AND SIGNAGE (PARENT HOSPITAL)



G. Suresh
PRINCIPAL
P K DAS COLLEGE OF NURSING
- PANAYUR (P.O.), VANIYAMKULAM
- OTTAPALAM, PALAKKAD DT
KERALA - 679522



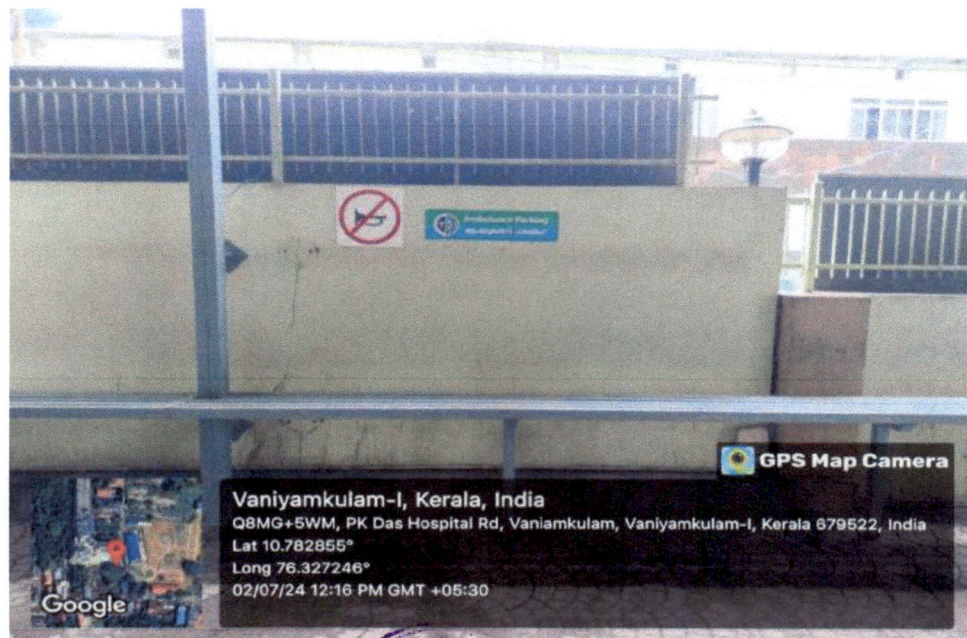
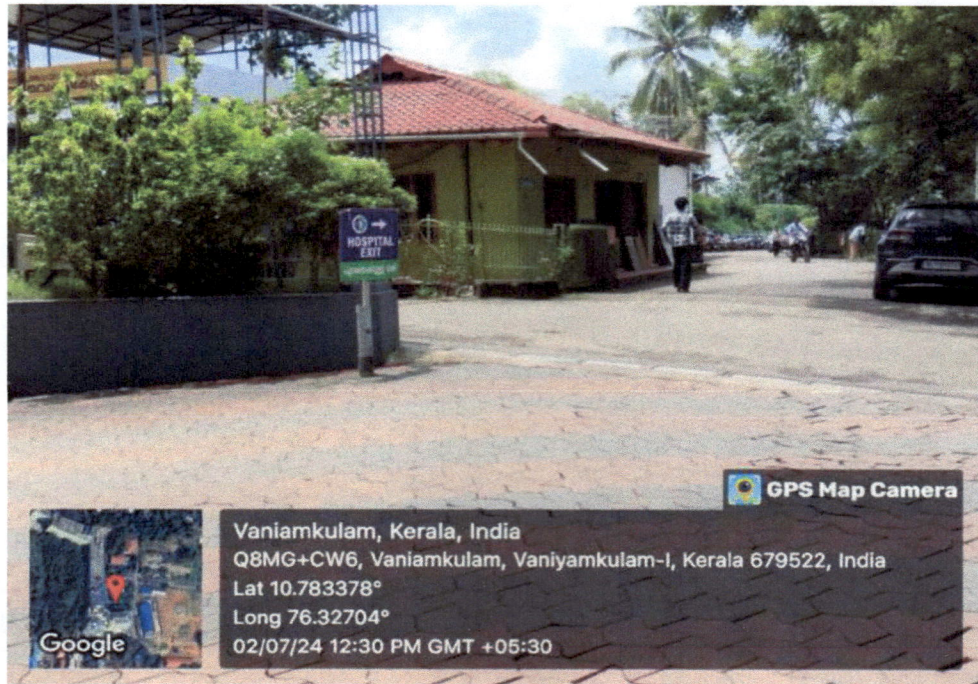
NEHRU COLLEGE of NURSING



PANAYUR (P O), VANIYAMKULAM, PALAKKAD - 679 522

(Approved by Indian Nursing Council, Kerala Nurses & Midwives Council & Kerala Government
Affiliated to Kerala University of Health Sciences)

ROADS AND SIGNAGE (PARENT HOSPITAL)



SPK
PRINCIPAL
P K DAS COLLEGE OF NURSING
PANAYUR (P.O), VANIYAMKULAM
OTTAPALAM, PALAKKAD DT
KERALA - 679522